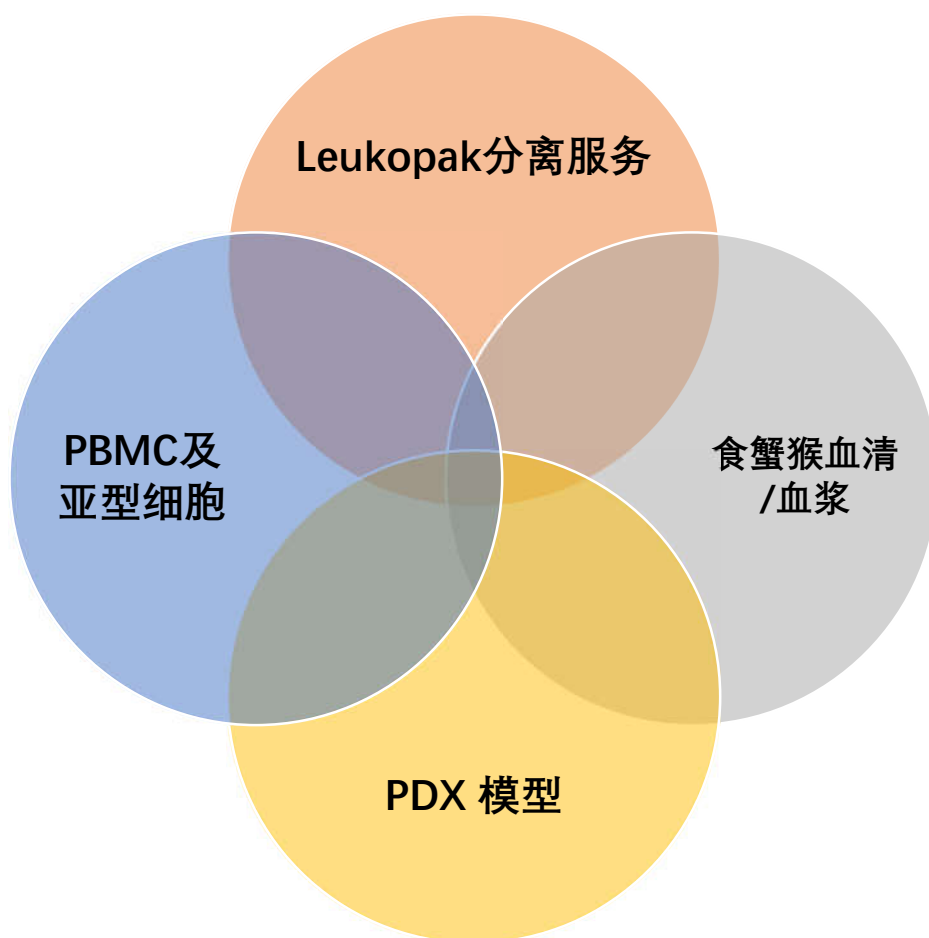


PRODUCT CATALOG 2020



上海儒百生物科技有限公司

www.schbio.com

Catalog

Leukopak分离服务	3
健康人外周血系列	5
健康人脐血系列	6
健康人骨髓系列	6
健康人动员外周血系列.....	7
StemExpress 健康人血浆, 血清.....	8
Schbio 猴子血浆, 血清.....	8
疾病患者外周血PBMC, 血浆, 血清.....	9
阴性对照抗体	10
PDX模型	11

Leukopak分离服务

Leukopak 的主要成分

- 1) Mononuclear Cells(PBMNC)
- 2) Red Blood Cells(RBC)
- 3) Plasma
- 4) Platelets

Leukopak 产品优势

- 1)按照美国 StemExpress 的标准采集、运输
- 2)提供 Donor 签署的知情同意书
- 3)Donor 病毒测试为阴性 (HIV-1/2、HBV、HCV、梅毒)
- 4)Donor 新冠咽拭子核酸检测为阴性, CT 检查无异常
- 5)每个批次的产品均提供 COA
- 6)提供产品冷链运输全程的温控记录
- 7)可以按用户要求提供特殊病毒检测 (EBV/CMV/HTLV/结核等)
- 8)可提供 HLA 分型检测等

产品货号信息

细胞状态	货号	规格	规格
Fresh	LE010F	8.0-10x10 ⁹	Full bag
Fresh	LE005F	4.5-5.5x10 ⁹	Half Pak
Fresh	LE002.5F	2.5-3.0x10 ⁹	Quarter Pak

服务描述

健康 donor, 采用细胞单采仪分离出的样本, 具有更高浓度的单核细胞、B 细胞、T 细胞、干细胞、树突状细胞和其他类型的细胞。

产品应用

细胞治疗工艺验证

细胞资料生产验证

UCAR-T 产品原材料 (多中心)

健康人外周血系列

个体筛选

持续扩大的个体库；

捐献者持续回召，同一个体一年最多可提供 600 管 100million PBMC 产品；

可根据 年龄，性别，人种，BMI，是否吸烟，是否用药，亚型含量进行筛选；

可筛选特定 HLA, RhD, ABO 个体；

可筛选 CMV Positive 个体；

可提供 MLR, SEB, ADCC 等实验个体；

筛选期间指定库存可免费保留 2 个月；

细胞采集与处理

FDA 批准的伦理批件 IRB、捐献者知情文件 ICF 完善；

所有个体均经过 HIV/HBV/HCV 等病毒检测；

每批次产品均提供标准化 COA 报告；

同一个体可提取不同亚型细胞；

全程温控运输（全程温度监控，保证产品安全）

最短货期（国内有充足库存满足短期需求）



健康人外周血系列

Normal Peripheral Blood Mononuclear Cells

Format	Catalog #	Qty/unit
Cryopreserved(C)	PBMNC015C	15 million/vial
	PBMNC025C	25 million/vial
	PBMNC050C	50 million/vial
	PBMNC100C	100 million/vial
Fresh(F)	PBMNC015F	15 million/vial
	PBMNC025F	25 million/vial
	PBMNC050F	50 million/vial
	PBMNC100F	100 million/vial
	PBMNC200F	200 million/vial

CD3+ Pan T Cells

Format	Selected	Catalog #	Qty/unit
Cryopreserved	Negative	PB03020C	20 million/vial
		PB03030C	30 million/vial
		PB03040C	40 million/vial

CD4+ Helper T Cells

Format	Selected	Catalog #	Qty/unit
Cryopreserved	Negative	PB04010C	10 million/vial
		PB04015C	15 million/vial

CD8+ Cytotoxic T Cells

Format	Selected	Catalog #	Qty/unit
Cryopreserved	Negative	PB08010C	10 million/vial

CD56+ Natural Killer Cells

Format	Selected	Catalog #	Qty/unit
Cryopreserved	Negative	PB56005C	5 million/vial

CD19+ B Cells

Format	Selected	Catalog #	Qty/unit
Cryopreserved	Negative	PB19010C	10 million/vial

CD14+ Monocytes

Format	Selected	Catalog #	Qty/unit
Cryopreserved	Negative	PB14010C	10 million/vial
		PB14020C	20 million/vial
		PB14040C	40 million/vial

健康人脐血系列

Cord Blood Mononuclear Cells

Format	Catalog #	Qty/unit
Cryopreserved	CBMNC015C	15 million/vial
	CBMNC050C	50 million/vial
	CBMNC100C	100 million/vial

CD34+ Stem/Progenitor Cells

Format	Donor #	Catalog #	Qty/unit		
Cryopreserved	Single	CB3400.5C	0.5 million/vial		
		CB3401C	1 million/vial		
		CB3402C	2 million/vial		
	Mixed		CBP3400.5C	0.5 million/vial	
			CBP3401C	1 million/vial	
			CBP3402C	2 million/vial	
			CBP3405C	5 million/vial	

Mesenchymal Stem Cells

Format	Catalog #	Qty/unit
Cryopreserved	CBMSC001C	1 million/vial
	CBMSC002C	2.5 million/vial

健康人骨髓系列

Catalog #	Description	Qty/unit
BMMNC025C	Mononuclear Cells	25 million/vial
BMMNC050C	Mononuclear Cells	50 million/vial
BMMNC100C	Mononuclear Cells	100 million/vial
BM133000.5C	CD133+ Stem/Progenitor Cells	0.5 million/vial
BM133001C	CD133+ Stem/Progenitor Cells	1 million/vial
BM133002C	CD133+ Stem/Progenitor Cells	2 million/vial
BM36001C	CD36+ Erythroid Progenitor Cells	1 million/vial
BM36002.5C	CD36+ Erythroid Progenitor Cells	2.5 million/vial
BM34000.5C	CD34+ Stem/Progenitor Cells	0.5 million/vial
BM34001C	CD34+ Stem/Progenitor Cells	1 million/vial
BM34002C	CD34+ Stem/Progenitor Cells	2 million/vial
BM3366001C	CD33+CD66+ Myeloid Cells	1 million/vial
BM3366002C	CD33+CD66+ Myeloid Cells	2 million/vial
BM10500.2C	CD105+ Cells	0.2 million/vial
BMMSC001C	Mesenchymal Stem Cells	1 million/vial
BMMSC002C	Mesenchymal Stem Cells	2 million/vial

健康人动员外周血系列

Catalog #	Name
GCSF Mobilized Products	
MLEGMNC015C	Mobilized Peripheral Blood MNC, 15M
MLEGMNC025C	Mobilized Peripheral Blood MNC, 25M
MLEGMNC050C	Mobilized Peripheral Blood MNC, 50M
MLEGMNC100C	Mobilized Peripheral Blood MNC, 100M
MLEG34001C	Mobilized Peripheral Blood CD34+, 1M
MLEG34005C	Mobilized Peripheral Blood CD34+, 5M
MLEG34010C	Mobilized Peripheral Blood CD34+, 10M
MLEG34020C	Mobilized Peripheral Blood CD34+, 20M
GCSF+Plerixafor Isolated Products	
MLEGPMNC015C	Mobilized Peripheral Blood MNC, 15M
MLEGPMNC025C	Mobilized Peripheral Blood MNC, 25M
MLEGPMNC050C	Mobilized Peripheral Blood MNC, 50M
MLEGPMNC100C	Mobilized Peripheral Blood MNC, 100M
MLEGP34001C	Mobilized Peripheral Blood CD34+, 1M
MLEGP34005C	Mobilized Peripheral Blood CD34+, 5M
MLEGP34010C	Mobilized Peripheral Blood CD34+, 10M
MLEGP34020C	Mobilized Peripheral Blood CD34+, 20M
Plerixafor Isolated Products	
MLEPMNC015C	Mobilized Peripheral Blood MNC, 15M
MLEPMNC025C	Mobilized Peripheral Blood MNC, 25M
MLEPMNC050C	Mobilized Peripheral Blood MNC, 50M
MLEPMNC100C	Mobilized Peripheral Blood MNC, 100M
MLEP34001C	Mobilized Peripheral Blood CD34+, 1M
MLEP34005C	Mobilized Peripheral Blood CD34+, 5M
MLEP34010C	Mobilized Peripheral Blood CD34+, 10M
MLEP34020C	Mobilized Peripheral Blood CD34+, 20M

StemExpress 健康人血浆, 血清

根据IRB批准的方案, 在FDA注册的设施中, 使用StemExpress标准操作程序, 从签署知情同意书的健康捐献者 (HBV、HCV和HIV呈阴性者) 采集的。这使我们可以根据您的具体规格定制每一个订单, 同时保持最高水平的产品质量。

可指定纳入和/或排除标准, 如年龄、性别、体重、种族、吸烟状况等。还可在产品要求中添加特定问题, 以便对捐赠者进行定制筛选。

Format	可选抗凝剂	规格
Cryopreserved	EDTA	Peripheral Blood Plasma, Frozen, 5mL
	ACD-A	Peripheral Blood Plasma, Frozen, 25mL
		Peripheral Blood Plasma, Frozen, 50mL

Format	Catalog #	规格
Cryopreserved	PBSR005C	Peripheral Blood Serum, Frozen, 5mL
	PBSR010C	Peripheral Blood Serum, Frozen, 10mL
	PBSR015C	Peripheral Blood Serum, Frozen, 15mL
	PBSR020C	Peripheral Blood Serum, Frozen, 20mL
	PBSR025C	Peripheral Blood Serum, Frozen, 25mL

Schbio 猴子血浆, 血清

使用 SCHBIO 标准操作程序收集的。这使我们可以根据您的具体规格定制每一个订单, 同时保持最高水平的产品质量。

血清质量标准:

- 1、来自养殖场内健康未给药的空白食蟹猴;
- 2、血清使用分离胶采血管采集, 血样正常, 无溶血;
- 3、血清为新鲜采集, 未经过解冻;
- 4、储存温度-20°C条件下血清有效期为 12 个月;

Format	Catalog #	规格
Cryopreserved	MSR005C	Monkey Peripheral Blood Serum, Frozen, 5mL
	MSR025C	Monkey Peripheral Blood Serum, Frozen, 25mL
	MSR050C	Monkey Peripheral Blood Serum, Frozen, 50mL
	MSR100C	Monkey Peripheral Blood Serum, Frozen, 100mL

疾病患者外周血PBMC, 血浆, 血清

StemExpress is a premier provider of human diseased peripheral blood, plasma, serum, and peripheral blood mononuclear cells (PBMCs). Using our strategically located collection centers and our partnering hospitals, we are able to ensure access to donors and the delivery of fresh products to researchers in need of rare blood samples.

Diseased peripheral blood samples are collected from volunteers participating in Institutional Review Board (IRB) approved donor programs. All collections follow a standardized collection procedure to guarantee consistency from donor to donor, eliminating variability in the collection procedure. In addition, donors may be eligible for recall every 8 weeks (pending the health of the donor), which allows for the study of disease progression within a single donor.

PRODUCT OPTIONS

- **Plasma:** Samples are collected in 5mL and 10mL volumes in EDTA tubes. All samples are provided in either fresh or frozen formats.
- **Serum:** Samples are collected in 5mL and 10mL volumes in the absence of an anticoagulant. All samples are provided in either fresh or frozen formats.
- **PBMCs:** Diseased cells are available in 5×10^6 and 1×10^7 cells/vial in either fresh or frozen formats.

CANCERS

- [Thyroid Cancer Remission](#)
- [Breast Cancer Remission](#)
- [Oral Cancer Remission](#)
- [Hodgkin's Lymphoma](#)
- [Non-Hodgkin's Lymphoma](#)
- [Prostate Cancer](#)
- [Breast Cancer](#)
- [Lung Cancer](#)
- [T-Cell Lymphoma](#)
- [Acute Lymphoid Leukemia](#) (ALL)
- [Chronic Myeloid Leukemia](#) (CML)
- [Acute Myeloid Leukemia](#) (AML)
- [Chronic Lymphocytic Leukemia](#) (CLL)
- [Multiple Myeloma](#) (MM)

AUTOIMMUNE DISEASES

- [Systemic Lupus Erythematosus](#) (SLE)
- [Rheumatoid Arthritis](#)
- [Crohn's Disease](#)
- [Diabetes Mellitus Type 1](#) (Type 1 Diabetes)

DISORDERS

- [Parkinson's](#)
- [Chromosomal Disorders](#)
- [Muscular Disorders](#)
- [Diabetes Mellitus Type 2](#) (Type 2 Diabetes)

阴性对照抗体

背景

抗体的非特异性结合可能是由于抗体与 Fc 受体的结合或与细胞蛋白、脂类或碳水化合物的非特异性相互作用而产生的。此外，目标细胞中的自体荧光或内源性酶活性可能会产生假阳性,可能会被误解为抗体结合。

同型对照抗体应没有相关的特异性,它们使研究人员能够区分非特异性 "背景"结合与抗原特异性抗体结合。

应用

我们的 Human IgG kappa 同型对照抗体可作为阴性对照、标准品、阻滞剂或涂层蛋白，用于各种小鼠体内 (In-Vivo) 研究和体外 Assay 研究，如 ELISA、流式细胞仪 (FACS)。

Catalog#	Description
B117901	Anti-HEL-Human IgG1 Isotype-control
B109801	Anti-HEL-Human IgG1 (N297A) Isotype-control
B109802	Anti-HEL-Human IgG1 LALA Isotype-control
B107803	Anti-HEL-Human IgG2 Isotype-control
B109803	Anti-HEL-Hunan IgG3 Isotype-control
B107804	Anti-HEL-Human IgG4 (S228P) Isotype-control
B109805	Anti-HEL-Human IgG4 (S228P L235E) Isotype-control
B115101	anli-HEL- Mouse IgG2A Isotype-control
B118301	Anti-HEL- Mouse IgG1 Isotype-control

严格的QC指标

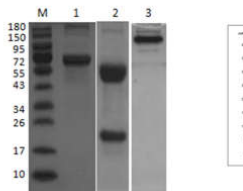
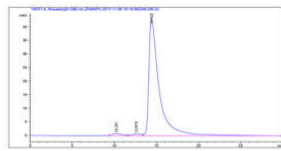


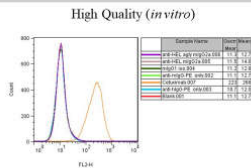
Fig: SDS-PAGE analysis of Isotype IgG1
Lane M: Protein Marker
Lane 1: Positive control (BSA)
Lane 2: Isotype IgG1 (Reducing conditions)
Lane 3: Isotype IgG1 (Non-reducing conditions)
Human IgG1, kappa Isotype Control, SDS-PAGE analysed by SDS-Page.



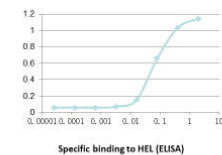
Human IgG1, kappa Isotype Control, analysed by SEC-HPLC.

QC	
Concentration	1mg/ml
Purity	>95%
Endotoxin Level	<0.1 EU/ug

体外和体内数据验证

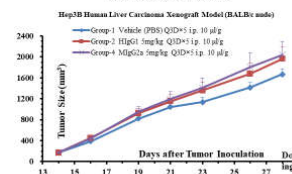
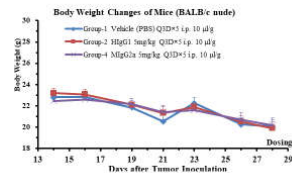


No cross-reactivity (e.g. A549 cells, FACS)



Specific binding to HEL (ELISA)

High Quality (in vivo, immune deficient animals)



www.schbio.com



www.schbio.com

PDX模型

245 例现货库存（持续在增加），包括肝癌、白血病、膀胱癌、淋巴瘤、胆囊癌、鼻咽癌等少见模型。

技术指标：

1. 所有 PDX 模型经过 HE 染色+人源化鉴定（PCR 法）；
2. 提供的 PDX 模型新鲜肿瘤组织体积不小于 500mm³；
3. 组织活性经 0.4%台盼蓝染色不低于 70%；
4. 肿瘤接种成功率 > 50%（和供体小鼠同一免疫缺陷级别或者更高级别小鼠接种）。

随货文件：

1. PDX 模型既往接种、肿瘤生长数据；模型鉴定数据（HE 等）；
2. 病史，病毒检测结果，影像学资料，病理报告，基因检测信息（若有），临床诊断结果，治疗经过（若有）等相关信息。



www.schbio.com

Quantity, Speed & Service

Shanghai Schbio Biotech Co., LLC

Tel: 18521561575

Email: info@schbio.com